



David graduated from Glasgow in 1991 and went on to complete a further postgraduate qualification in Dundee. He completed his training with local practices in Scotland he joined Albert Speer and Partners based in Frankfurt, Germany and worked on a variety of industrial and commercial office buildings.

After spending 10 years in Germany, gaining experience in a range of projects including the Commerzbank, Deutsche Bank Traders Center and several Media Distribution Centres within Europe and Asia, he returned to the UK. On his return he joined Foster & Partners working on projects including the Gibraltar Masterplan and the Aldwych Hotel in London.

To further enhance his UK experience David successfully led a major landmark mixed use development at Hammersmith Grove in London and was also involved in the design of a number of private villas and the upgrade of a significant building located on Regent Street into viable office space.

He has dealt with major corporate clients over an extensive portfolio of work focusing on key commercial projects for major companies including IBM, EDF and Deutsche Bank. His experience also includes industrial, educational, military and leisure schemes giving him wide range of expertise across a number of sectors.

He recently joined Reed Holland Associates after leading the Hinkley Point C Nuclear project located in Somerset, drawing upon his experience gained over 20 years of working in the UK and Europe.

Qualifications:

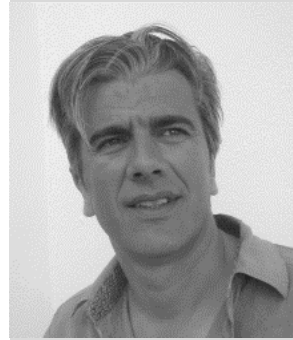
- BSc(Hons) Degree in Architecture
- BArch, RIBA Part I, II and III
- MScCAAD (Postgraduate Masters)

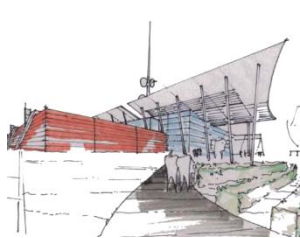
Affiliations:

- RIBA
- RIAS

Languages:

- English,
- German (Fluent),
- French





December 2011 – Present

Director
Reed Holland Associates
Taunton
Somerset

Oct 2009 – Nov 2011

Associate
YRM
London

December 2006 – Sept 2009

Associate
Hamiltons (BFLS)
London

July 2005 – November 2006

Project Architect
Scott Brownrigg, London

October 2003 – June 2005

Project Architect
Foster & Partners, London

April 1999 – Sept 2003

Project Architect
Kohler Architekten
Frankfurt, Germany

August 1997 – March 1999

Architect
Albert Speer & Patner
Frankfurt, Germany

July 1994 – July 1997

Architectural Assistant
Sheppard Robson

- COACH Rowing Club, Taunton
- Highbridge Business Park
- ASD Unit, Preston School, Yeovil
- Bespoke House, 38 The Bishops Avenue, London
- Shearwell Data livestock facility
- Hinkley Point C Nuclear Power Plant, Master Plan, Turbine Halls and Visitor Centre
- Business Park, Sofia, Bulgaria
- Hammersmith Grove - Mixed Use, London
- Kenwood Place, Regent St, London
- The Kent Schools – 6 PFI Schools
- Herald Business Park, Kent
- The Silken Hotel, Aldwych, London
- Gibraltar Masterplan
- The Software Factory, Frankfurt
- Karstadt Retail Outlet, Leipzig
- IBM Offices, Sossenheim
- IBC Deutsche Bank Trading Centre
- Victoria Tower – Skyscraper
- Mannheim, Germany
- Haus am Park, Frankfurt
- HM Trident Naval Base Devenport, Plymouth
- Gulf House, Oxford St, London